



## Amphorae from site Žuta Lokva



Aerial view

Excavations at Žuta Lokva yielded the building, dimensions 25 x 20 m, dating from 1st to beginning of the 2nd century. Dimensions of a building are 20 X 25 and it had two phases. This building was probably a *caupona*, *diversorium* or *hospitium* on a road that connected the port of Senia (Senj) with Roman towns *Avendo* (Kmpolje) and *Arrupium* (Prozor near Otočac) in hinterland of Siscia (Sisak) in Pannonia.

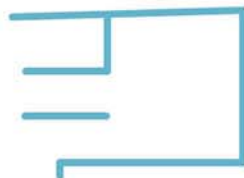
Pottery material showed a large number of *Sarius* cups, north Italian *terra sigillata*, thin walled pottery and African *sigillata*, pottery from Dalmatian workshops in Crikvenica and other table and coarse ware.



Plan of the site



1 st phase



2nd phase

## Dressel 2-4



## Flatt bottom amphorae



Jug with two handles

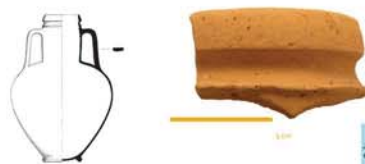
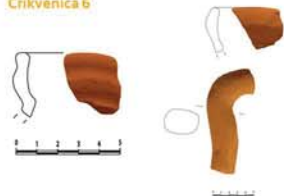
Pannonian

## Dressel 6b



## Amphorae from Crikvenica

Flatt bottom  
Crikvenica 6



## Dressel 20



## Small amphorae

